

Scaled data based on original data using  
LM-79-08 Approved Method: Electrical and Photometric Measurements of Solid-  
State Lighting Products

Test Report Prepared for  
Cooper Lighting Solutions  
(formerly Eaton)

Brand: INVUE

Report Number: P149954

Luminaire Tested: **VWM-F04-LED-E1-SL2-7030**

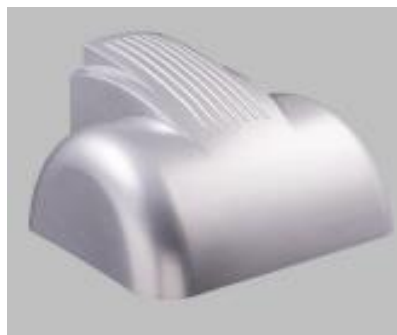
Issue Date: 03/03/2020

**Test Information**

Test Method: LM-79-08  
Report Number: P149954  
REPORT IS SCALED FROM IESNA LM-79-08 TEST DATA (P33678)  
Test Lab: INNOVATION CENTER-P3  
Issue Date: 03/03/2020  
Manufacturer: COOPER LIGHTING SOLUTIONS (FORMERLY EATON)  
Product Line: INVUE  
Catalog Number: VWM-F04-LED-E1-SL2-7030  
Description: VISION WALL MEDIUM LED LUMINAIRE  
(4) LIGHTBARS WITH AccuLED OPTICS - TYPE 2 W/ SPILL LIGHT CONTROL  
Light Source: (28) 3000K CCT, 70 CRI LEDs  
Ballast/Driver: -

**Summary**

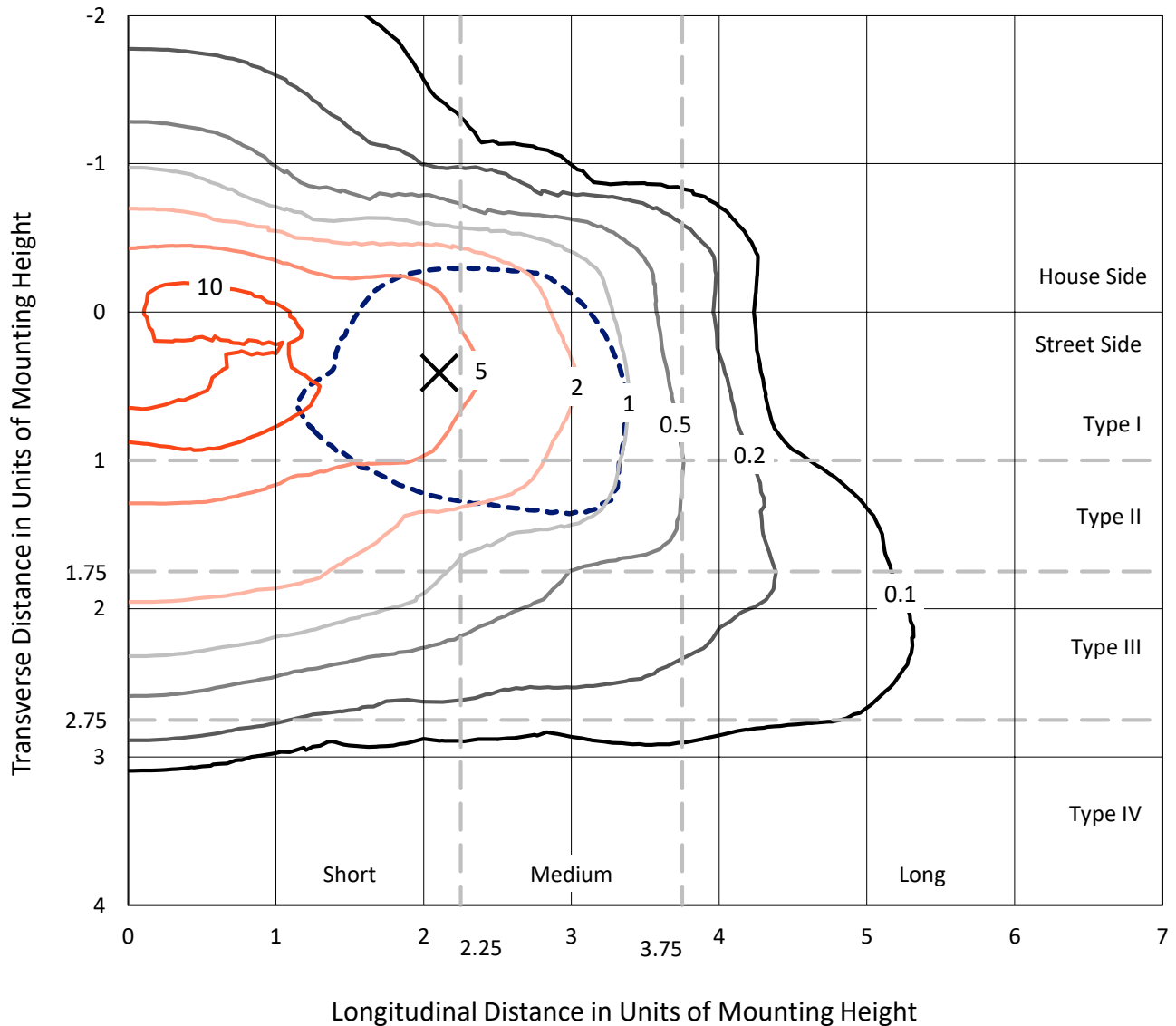
Lumens per Lamp: N/A  
Luminaire Lumens: 9214.1 lumens  
Efficiency: N/A  
Efficacy: 90.2 lumens/watt  
Luminous Opening: Rectangular (W 0.67' x L: 1' x H: 0')  
IES Classification: Type II - Short - Non-Cutoff  
BUG Rating: B2 - U0 - G2  
  
Input Watts (W): 102.2  
Input Voltage (V): NR  
Input Current (Ain): NR  
Voltage Rise (V): NR  
Power Factor: NR  
Total Harmonic Distortion (THDi): NR  
Frequency (hertz): 60  
Stabilization Time: NR  
Operation Time: NR  
Ambient Temperature (°C): NR  
Test Distance: 25 FT



REPORT NUMBER: P149954  
 CATALOG NUMBER: VWM-F04-LED-E1-SL2-7030

### Iso-Footcandle Lines of Horizontal Illumination

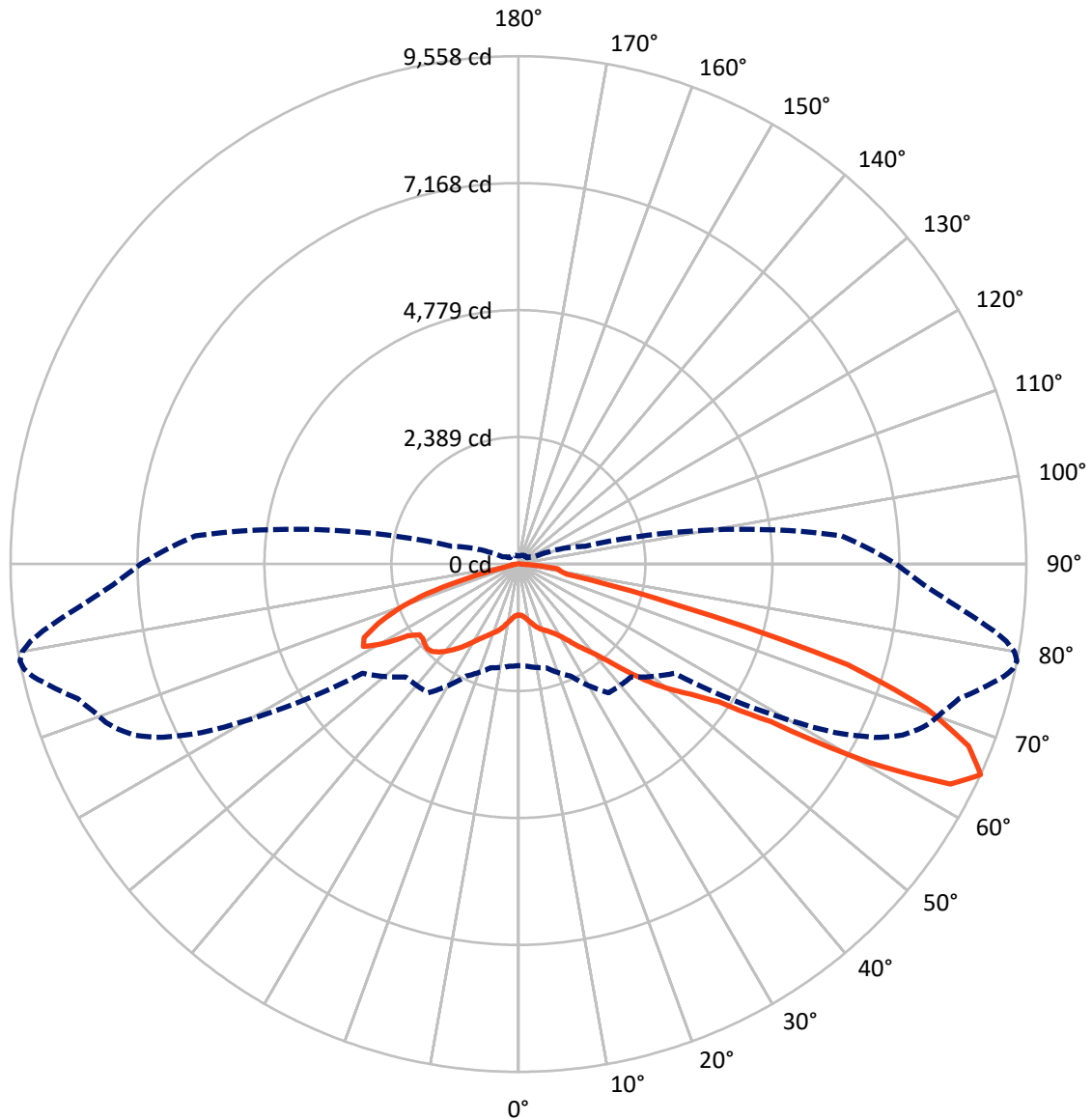
× Max cd  
 - - - 1/2 Max cd



Based on 10 foot mounting height. Maximum calculated value = 12.7 fc  
 Type II - Short - Non-Cutoff

REPORT NUMBER: P149954  
CATALOG NUMBER: VWM-F04-LED-E1-SL2-7030

### Luminous Intensity Polar Plot



— Vertical Plane Through 79-Deg Lateral    - - - Horizontal Cone Through 65-Deg Vertical

REPORT NUMBER: P149954

CATALOG NUMBER: VWM-F04-LED-E1-SL2-7030

**FLUX DISTRIBUTION:**

		Downward	Upward	Total
<b>House Side</b>	Lumens	2178.2	0.0	2178.2
	% Fixture	23.6	0.0	23.6
<b>Street Side</b>	Lumens	7035.9	0.0	7035.9
	% Fixture	76.4	0.0	76.4
<b>Total</b>	Lumens	9214.1	0.0	9214.1
	% Fixture	100.0	0.0	100.0

**Coefficient of Utilization**

**ZONAL LUMENS:**

Zone	Lumens	% Fixture
0°-10°	95.3	1.0
10°-20°	311.7	3.4
20°-30°	538.4	5.8
30°-40°	891.3	9.7
40°-50°	1511.6	16.4
50°-60°	2008.4	21.8
60°-70°	2594.4	28.2
70°-80°	1088.1	11.8
80°-90°	174.8	1.9
90°-100°	0.0	0.0
100°-110°	0.0	0.0
110°-120°	0.0	0.0
120°-130°	0.0	0.0
130°-140°	0.0	0.0
140°-150°	0.0	0.0
150°-160°	0.0	0.0
160°-170°	0.0	0.0
170°-180°	0.0	0.0
0°-90°	9214.1	100.0
0°-180°	9214.1	100.0



REPORT NUMBER: P149954

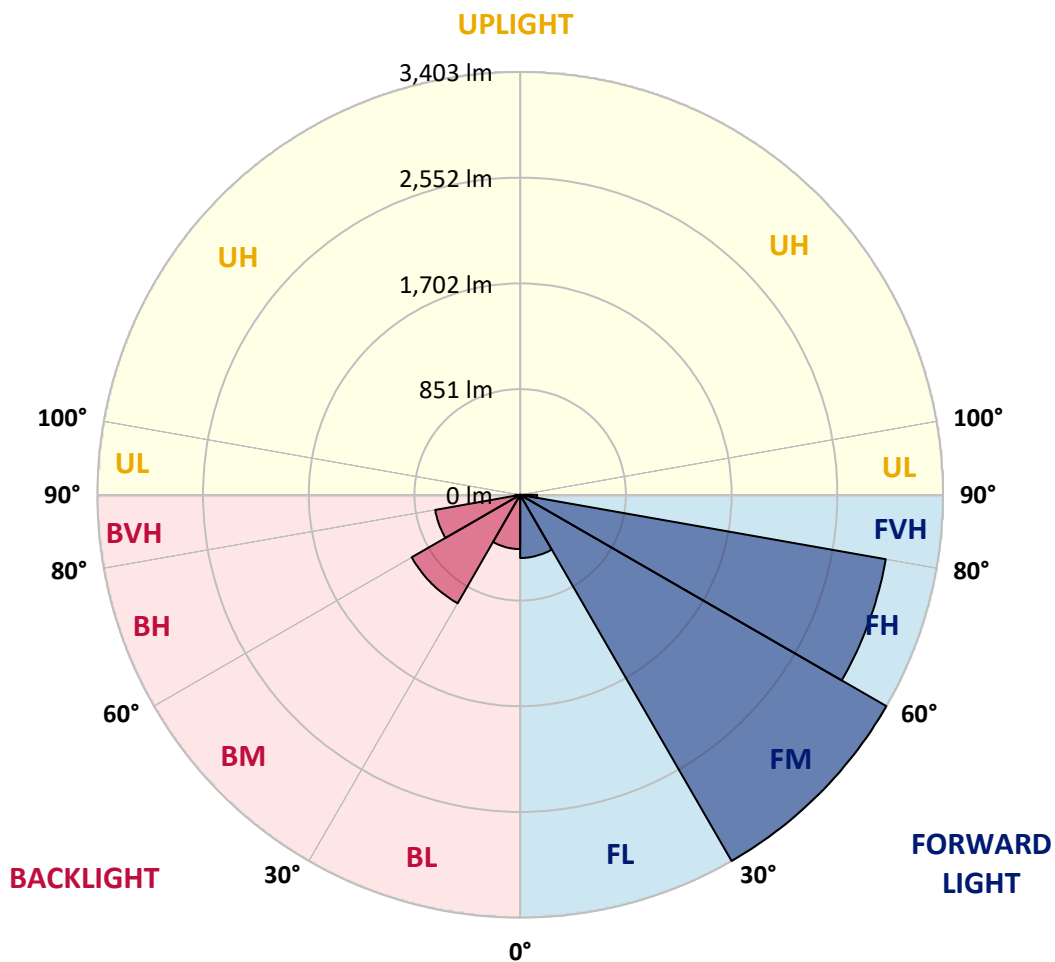
CATALOG NUMBER: VWM-F04-LED-E1-SL2-7030

**LUMINAIRE CLASSIFICATION SYSTEM LUMEN TABLE AND BUG RATING:**

Zone		Lumens	% Fixture	Zone Rating/Lumen Limit		
				B	U	G
FL	(0°-30°)	508.4	5.5			
FM	(30°-60°)	3403.0	36.9			
FH	(60°-80°)	2987.8	32.4			G2/5000
FVH	(80°-90°)	136.7	1.5			G2/225
BL	(0°-30°)	437.1	4.7	B1/500		
BM	(30°-60°)	1008.3	10.9	B2/2500		
BH	(60°-80°)	694.7	7.5	B2/1000		G2/1000
BVH	(80°-90°)	38.1	0.4			G1/100
UL	(90°-100°)	0.0	0.0		U0/0	
UH	(100°-180°)	0.0	0.0		U0/0	

**BUG Rating: B2-U0-G2**

Type II Short





REPORT NUMBER: P149954

CATALOG NUMBER: VWM-F04-LED-E1-SL2-7030

**CANDELA DISTRIBUTION (FULL):**

	0°	5°	15°	25°	35°	45°	55°	60°	61°	62°	64°
0°	959.1	959.1	959.1	959.1	959.1	959.1	959.1	959.1	959.1	959.1	959.1
2.5°	956.1	959.1	957.1	959.1	961.1	962.1	964.1	963.1	963.1	964.1	962.1
5°	956.1	956.1	959.1	964.1	966.1	972.1	979.2	978.2	979.2	978.2	980.2
7.5°	976.2	975.2	978.2	984.2	986.2	995.3	1007.3	1009.3	1011.4	1011.4	1014.4
10°	1011.4	1010.4	1013.4	1016.4	1019.4	1026.4	1043.5	1050.6	1051.6	1052.6	1056.6
12.5°	1055.6	1054.6	1050.6	1050.6	1049.6	1062.6	1085.8	1098.8	1100.8	1104.9	1107.9
15°	1086.8	1083.7	1077.7	1073.7	1078.7	1099.8	1134.0	1149.1	1151.1	1154.1	1162.2
17.5°	1116.9	1113.9	1100.8	1090.8	1097.8	1132.0	1178.2	1194.3	1198.3	1201.4	1210.4
20°	1159.1	1157.1	1138.0	1113.9	1111.9	1156.1	1212.4	1233.5	1236.5	1240.6	1249.6
22.5°	1223.5	1214.4	1192.3	1147.1	1125.0	1170.2	1236.5	1265.7	1269.7	1273.7	1285.8
25°	1303.9	1299.9	1261.7	1192.3	1146.1	1184.3	1262.7	1298.9	1304.9	1309.9	1326.0
27.5°	1387.3	1381.3	1340.1	1249.6	1183.3	1212.4	1303.9	1345.1	1353.2	1361.2	1376.3
30°	1461.7	1459.7	1425.6	1327.0	1243.6	1265.7	1370.3	1420.5	1429.6	1439.6	1453.7
32.5°	1636.7	1637.7	1602.5	1502.0	1389.4	1362.2	1465.8	1541.2	1545.2	1557.2	1582.4
35°	1971.4	1975.5	1962.4	1883.0	1756.3	1644.7	1654.8	1729.2	1733.2	1743.2	1767.4
37.5°	2195.6	2203.7	2243.9	2269.0	2204.7	2153.4	2025.7	1996.6	1999.6	1993.6	1988.5
40°	2319.3	2331.3	2436.9	2567.6	2638.0	2639.0	2583.7	2455.0	2405.7	2391.7	2331.3
42.5°	2389.7	2409.8	2559.6	2782.7	2984.8	3123.5	3157.7	3015.0	2978.8	2914.4	2798.8
45°	2435.9	2460.0	2637.0	2942.6	3240.2	3476.4	3654.4	3591.0	3566.9	3527.7	3421.1
47.5°	2427.9	2447.0	2630.9	2996.9	3373.9	3709.6	4025.3	4090.7	4061.5	4051.5	3979.1
50°	2281.1	2298.2	2485.2	2862.2	3300.5	3798.1	4260.6	4445.5	4445.5	4464.6	4442.5
52.5°	2124.3	2138.3	2308.2	2647.0	3063.2	3711.7	4391.3	4697.9	4738.1	4771.3	4823.5
55°	2064.9	2082.0	2210.7	2500.2	2861.2	3464.3	4435.5	4886.9	4961.3	5017.6	5136.2
57.5°	2093.1	2110.2	2201.7	2420.8	2742.5	3212.0	4437.5	5141.2	5285.0	5400.6	5640.9
60°	2214.7	2230.8	2307.2	2494.2	2711.4	3066.2	4352.1	5546.4	5775.6	5992.7	6392.9
62.5°	2158.4	2178.5	2290.1	2615.9	2943.6	2955.7	4043.4	5860.0	6229.0	6549.7	7186.1
65°	1912.1	1933.2	2020.7	2325.3	2957.7	3003.9	3586.0	5866.1	6324.5	6757.8	7444.4
67.5°	1451.7	1459.7	1529.1	1773.4	2365.5	3057.2	3115.5	5171.4	5607.7	6091.3	6800.0
70°	741.9	756.0	776.1	979.2	1523.1	2526.4	2677.2	3811.2	4367.1	4866.8	5718.3
72.5°	257.4	262.4	282.5	374.0	741.9	1657.8	2343.4	2611.8	2947.6	3415.1	4401.3
75°	154.8	154.8	161.9	189.0	338.8	863.6	2085.0	2133.3	2178.5	2335.4	2980.8
77.5°	122.6	124.7	124.7	129.7	188.0	443.3	1583.4	1983.5	1989.5	2004.6	2113.2
80°	87.5	91.5	99.5	103.5	121.6	243.3	888.7	1741.2	1859.9	1917.2	1996.6
82.5°	65.3	69.4	84.4	89.5	94.5	135.7	399.1	1201.4	1417.5	1532.1	1811.6
85°	29.2	34.2	57.3	63.3	66.4	72.4	187.0	341.8	393.1	441.3	582.1
87.5°	5.0	5.0	9.0	13.1	19.1	18.1	41.2	58.3	59.3	69.4	77.4
90°	0.0	0.0	0.0	0.0	0.0	0.0	0.0	0.0	0.0	0.0	0.0



REPORT NUMBER: P149954

CATALOG NUMBER: VWM-F04-LED-E1-SL2-7030

**CANDELA DISTRIBUTION (continued):**

	65°	66°	67°	68°	69°	70°	71°	72°	73°	74°	75°
0°	959.1	959.1	959.1	959.1	959.1	959.1	959.1	959.1	959.1	959.1	959.1
2.5°	962.1	962.1	962.1	961.1	962.1	962.1	962.1	962.1	963.1	963.1	963.1
5°	983.2	981.2	982.2	982.2	982.2	981.2	983.2	982.2	983.2	986.2	985.2
7.5°	1014.4	1016.4	1017.4	1018.4	1018.4	1018.4	1019.4	1021.4	1021.4	1024.4	1023.4
10°	1060.6	1059.6	1060.6	1063.6	1066.6	1067.7	1070.7	1069.7	1071.7	1075.7	1079.7
12.5°	1109.9	1111.9	1114.9	1117.9	1122.9	1124.0	1127.0	1128.0	1134.0	1134.0	1138.0
15°	1165.2	1166.2	1172.2	1173.2	1179.2	1181.3	1186.3	1188.3	1195.3	1196.3	1200.4
17.5°	1215.4	1217.4	1220.5	1223.5	1230.5	1233.5	1237.6	1241.6	1247.6	1249.6	1256.7
20°	1255.7	1259.7	1260.7	1266.7	1272.7	1276.8	1280.8	1284.8	1290.8	1293.9	1300.9
22.5°	1291.8	1295.9	1298.9	1303.9	1307.9	1314.0	1316.0	1323.0	1329.0	1334.1	1340.1
25°	1331.0	1337.1	1340.1	1349.1	1352.2	1358.2	1363.2	1370.3	1378.3	1384.3	1392.4
27.5°	1386.3	1395.4	1399.4	1409.5	1416.5	1419.5	1427.6	1437.6	1444.7	1451.7	1459.7
30°	1462.7	1479.8	1482.9	1489.9	1503.0	1505.0	1515.0	1523.1	1534.1	1541.2	1548.2
32.5°	1581.4	1602.5	1604.5	1612.5	1623.6	1627.6	1635.7	1644.7	1661.8	1664.8	1675.9
35°	1763.3	1772.4	1780.4	1783.4	1792.5	1797.5	1803.6	1813.6	1830.7	1828.7	1840.7
37.5°	1981.5	1984.5	1985.5	1975.5	1977.5	1968.4	1979.5	1981.5	1987.5	1992.6	2004.6
40°	2293.1	2262.0	2258.0	2233.8	2209.7	2196.6	2191.6	2171.5	2176.5	2178.5	2188.6
42.5°	2748.6	2688.2	2638.0	2603.8	2544.5	2515.3	2476.1	2444.9	2420.8	2429.9	2433.9
45°	3325.6	3239.2	3158.7	3054.2	2976.8	2921.5	2852.1	2789.8	2761.6	2748.6	2764.6
47.5°	3901.7	3825.3	3730.8	3623.2	3500.5	3409.1	3293.4	3191.9	3121.5	3095.4	3109.5
50°	4399.3	4328.9	4257.5	4194.2	4051.5	3951.9	3794.1	3662.4	3551.8	3495.5	3480.4
52.5°	4812.5	4775.3	4737.1	4683.8	4569.2	4469.7	4344.0	4214.3	4067.5	3952.9	3913.7
55°	5181.4	5203.6	5184.5	5185.5	5140.2	5076.9	4970.3	4873.8	4771.3	4641.6	4587.3
57.5°	5719.3	5850.0	5876.1	5941.5	5973.6	6007.8	6038.0	5980.7	5954.5	5858.0	5859.0
60°	6566.8	6757.8	6923.7	7074.5	7198.1	7318.8	7445.4	7501.7	7564.1	7593.2	7692.7
62.5°	7468.6	7650.5	7897.8	8099.9	8213.5	8370.3	8508.1	8597.5	8707.1	8823.7	8975.5
65°	7691.7	7910.9	8066.7	8201.4	8314.0	8397.5	8472.9	8579.4	8670.9	8855.9	9034.9
67.5°	7119.7	7294.6	7437.4	7570.1	7657.6	7727.9	7795.3	7865.7	8022.5	8190.4	8370.3
70°	6111.4	6322.5	6558.7	6730.6	6773.9	6834.2	6898.5	6990.0	7068.4	7244.4	7381.1
72.5°	4910.0	5213.6	5413.7	5651.9	5703.2	5794.7	5830.9	5902.3	5916.3	6011.8	6048.0
75°	3422.1	3770.0	3971.0	4146.0	4180.1	4129.9	4150.0	3897.6	3833.3	3781.0	3738.8
77.5°	2259.0	2352.5	2384.6	2356.5	2221.8	2116.2	2003.6	1893.0	1905.1	1815.6	1658.8
80°	2008.6	2029.8	2000.6	1972.4	1895.0	1784.5	1682.9	1579.4	1528.1	1473.8	1393.4
82.5°	1954.4	2035.8	2044.8	2010.6	1949.3	1828.7	1706.0	1552.2	1421.5	1300.9	1178.2
85°	653.5	795.2	858.5	917.9	936.0	957.1	884.7	786.2	667.5	588.1	460.4
87.5°	83.4	103.5	119.6	102.5	119.6	140.7	101.5	113.6	114.6	71.4	53.3
90°	0.0	0.0	0.0	0.0	0.0	0.0	0.0	0.0	0.0	0.0	0.0





REPORT NUMBER: P149954

CATALOG NUMBER: VWM-F04-LED-E1-SL2-7030

**CANDELA DISTRIBUTION (continued):**

	76°	77°	78°	79°	80°	81°	82°	83°	84°	85°	86°
0°	959.1	959.1	959.1	959.1	959.1	959.1	959.1	959.1	959.1	959.1	959.1
2.5°	964.1	963.1	963.1	963.1	962.1	963.1	963.1	963.1	963.1	963.1	962.1
5°	986.2	986.2	989.2	990.2	988.2	987.2	988.2	989.2	989.2	988.2	989.2
7.5°	1027.4	1028.4	1030.5	1033.5	1031.5	1032.5	1033.5	1032.5	1035.5	1036.5	1035.5
10°	1079.7	1081.7	1086.8	1087.8	1086.8	1090.8	1091.8	1089.8	1091.8	1091.8	1095.8
12.5°	1140.0	1142.0	1148.1	1150.1	1152.1	1153.1	1156.1	1157.1	1160.1	1162.2	1165.2
15°	1205.4	1207.4	1211.4	1218.5	1220.5	1222.5	1224.5	1230.5	1231.5	1235.5	1238.6
17.5°	1260.7	1263.7	1269.7	1274.8	1277.8	1282.8	1284.8	1291.8	1293.9	1299.9	1304.9
20°	1304.9	1309.9	1315.0	1321.0	1326.0	1332.1	1334.1	1341.1	1345.1	1348.1	1354.2
22.5°	1345.1	1351.2	1358.2	1365.2	1369.3	1377.3	1380.3	1383.3	1392.4	1396.4	1402.4
25°	1397.4	1403.4	1411.5	1420.5	1424.5	1434.6	1437.6	1442.6	1452.7	1456.7	1465.8
27.5°	1468.8	1476.8	1482.9	1491.9	1496.9	1504.0	1511.0	1517.0	1526.1	1532.1	1542.2
30°	1558.3	1564.3	1574.3	1581.4	1589.4	1599.5	1607.5	1613.5	1618.6	1627.6	1638.7
32.5°	1690.0	1691.0	1694.0	1711.1	1719.1	1727.1	1738.2	1743.2	1751.3	1760.3	1772.4
35°	1853.8	1862.9	1869.9	1877.9	1887.0	1896.0	1900.1	1915.1	1922.2	1934.2	1946.3
37.5°	2016.7	2017.7	2033.8	2038.8	2046.8	2055.9	2070.0	2085.0	2103.1	2115.2	2134.3
40°	2191.6	2199.7	2219.8	2229.8	2239.9	2262.0	2273.0	2297.2	2327.3	2344.4	2376.6
42.5°	2444.9	2457.0	2493.2	2509.3	2533.4	2569.6	2592.7	2625.9	2638.0	2679.2	2694.3
45°	2776.7	2813.9	2866.2	2900.4	2943.6	2982.8	3002.9	3018.0	3036.1	3068.3	3064.2
47.5°	3135.6	3183.9	3242.2	3312.5	3340.7	3386.9	3413.1	3442.2	3426.1	3418.1	3410.1
50°	3503.6	3559.9	3637.3	3700.6	3743.8	3772.0	3794.1	3790.1	3755.9	3737.8	3687.5
52.5°	3912.7	3945.9	4019.3	4073.6	4099.7	4105.7	4100.7	4070.6	4038.4	3981.1	3921.8
55°	4540.0	4525.0	4554.1	4579.3	4571.2	4599.4	4527.0	4498.8	4419.4	4345.0	4265.6
57.5°	5814.8	5834.9	5672.0	5598.7	5585.6	5611.7	5484.0	5468.0	5275.9	5251.8	5118.1
60°	7678.7	7777.2	7649.5	7578.1	7385.1	7321.8	7179.0	7119.7	6935.7	6786.9	6599.0
62.5°	9080.1	9169.6	9222.8	9121.3	9008.7	8842.8	8626.7	8387.4	8192.4	7964.2	7765.1
65°	9206.8	9387.7	9510.4	9557.6	9478.2	9296.2	9029.8	8728.2	8429.6	8143.1	7891.8
67.5°	8614.6	8776.5	8966.5	9136.4	9146.4	9027.8	8800.6	8494.0	8149.2	7795.3	7500.7
70°	7597.2	7800.3	7966.2	8145.1	8269.8	8201.4	8087.8	7806.3	7448.5	7173.0	6834.2
72.5°	6178.7	6264.2	6304.4	6480.3	6482.3	6357.7	6277.2	6121.4	5832.9	5637.9	5379.5
75°	3608.1	3420.1	3220.1	3046.1	2904.4	2845.1	2581.7	2537.4	2360.5	2250.9	2090.1
77.5°	1487.9	1320.0	1103.8	923.9	746.0	665.5	548.9	497.6	431.3	402.1	383.0
80°	1275.8	1116.9	954.1	798.2	659.5	520.8	405.1	314.7	247.3	210.1	195.0
82.5°	1041.5	946.0	832.4	748.0	639.4	535.8	452.4	350.9	262.4	193.0	147.8
85°	376.0	308.6	248.3	228.2	182.0	149.8	125.7	107.6	88.5	70.4	62.3
87.5°	42.2	40.2	23.1	22.1	25.1	18.1	21.1	19.1	16.1	14.1	15.1
90°	0.0	0.0	0.0	0.0	0.0	0.0	0.0	0.0	0.0	0.0	0.0



REPORT NUMBER: P149954

CATALOG NUMBER: VWM-F04-LED-E1-SL2-7030

**CANDELA DISTRIBUTION (continued):**

	87°	88°	89°	90°	95°	105°	115°	125°	135°	145°	155°
0°	959.1	959.1	959.1	959.1	959.1	959.1	959.1	959.1	959.1	959.1	959.1
2.5°	962.1	962.1	963.1	963.1	964.1	965.1	967.1	966.1	966.1	967.1	967.1
5°	989.2	992.3	991.3	991.3	991.3	992.3	993.3	989.2	985.2	981.2	979.2
7.5°	1036.5	1038.5	1040.5	1038.5	1040.5	1039.5	1037.5	1026.4	1013.4	997.3	986.2
10°	1097.8	1097.8	1099.8	1098.8	1102.8	1099.8	1093.8	1068.7	1040.5	1006.3	981.2
12.5°	1164.2	1171.2	1168.2	1169.2	1177.2	1169.2	1155.1	1117.9	1067.7	1012.4	968.1
15°	1242.6	1245.6	1247.6	1244.6	1249.6	1242.6	1217.4	1158.1	1084.7	1007.3	942.0
17.5°	1306.9	1307.9	1308.9	1310.9	1318.0	1309.9	1266.7	1186.3	1088.8	984.2	897.8
20°	1357.2	1362.2	1366.2	1366.2	1376.3	1364.2	1306.9	1200.4	1075.7	946.0	841.5
22.5°	1409.5	1413.5	1418.5	1419.5	1432.6	1420.5	1340.1	1197.3	1041.5	891.7	776.1
25°	1473.8	1477.8	1481.8	1486.9	1505.0	1487.9	1373.3	1185.3	994.3	827.4	705.7
27.5°	1548.2	1557.2	1560.3	1568.3	1589.4	1563.3	1401.4	1167.2	942.0	753.0	631.3
30°	1647.7	1658.8	1662.8	1673.9	1703.0	1645.7	1417.5	1136.0	875.6	677.6	551.9
32.5°	1781.4	1796.5	1808.6	1820.6	1853.8	1728.2	1419.5	1090.8	798.2	593.1	475.5
35°	1956.4	1979.5	1988.5	1996.6	2027.7	1817.6	1410.5	1023.4	703.7	506.7	415.2
37.5°	2152.4	2175.5	2181.6	2185.6	2191.6	1894.0	1388.4	920.9	597.2	431.3	366.9
40°	2393.7	2413.8	2421.8	2415.8	2383.6	1953.3	1339.1	801.2	493.6	380.0	336.8
42.5°	2688.2	2718.4	2721.4	2694.3	2587.7	1986.5	1240.6	660.5	412.2	342.8	313.7
45°	3053.2	3051.2	3034.1	3015.0	2809.9	1973.5	1102.8	537.8	360.9	313.7	292.5
47.5°	3380.9	3346.7	3320.6	3264.3	3005.9	1897.0	924.9	445.4	329.7	291.5	274.5
50°	3649.3	3587.0	3531.7	3470.4	3151.7	1761.3	748.0	378.0	300.6	272.4	257.4
52.5°	3861.5	3786.1	3721.7	3661.4	3292.4	1610.5	613.2	328.7	272.4	253.3	238.3
55°	4193.2	4117.8	4015.3	3948.9	3507.6	1471.8	525.8	289.5	245.3	233.2	218.2
57.5°	5032.7	4966.3	4843.7	4671.7	4060.5	1419.5	476.5	259.4	223.2	216.1	204.1
60°	6498.4	6390.8	6231.0	6056.1	5184.5	1454.7	437.3	238.3	208.1	202.1	193.0
62.5°	7604.3	7415.3	7234.3	7072.5	6083.2	1453.7	386.0	222.2	197.0	194.0	185.0
65°	7649.5	7457.5	7275.5	7105.6	6103.3	1293.9	325.7	208.1	195.0	194.0	178.9
67.5°	7243.4	7035.3	6859.3	6645.2	5649.9	1011.4	261.4	199.1	203.1	201.1	176.9
70°	6579.8	6308.4	6163.6	5952.5	4972.3	707.7	215.1	202.1	220.2	214.1	180.0
72.5°	5164.4	4959.3	4739.1	4592.3	3892.6	447.4	181.0	204.1	227.2	217.2	188.0
75°	1922.2	1977.5	1887.0	1854.8	1977.5	262.4	160.9	190.0	203.1	188.0	170.9
77.5°	388.1	371.0	351.9	347.8	449.4	161.9	147.8	164.9	155.8	137.7	138.7
80°	186.0	181.0	174.9	173.9	166.9	134.7	136.7	140.7	117.6	106.6	113.6
82.5°	123.7	116.6	114.6	110.6	112.6	120.6	129.7	120.6	90.5	84.4	102.5
85°	57.3	55.3	54.3	54.3	60.3	108.6	107.6	88.5	62.3	60.3	102.5
87.5°	14.1	14.1	15.1	14.1	16.1	32.2	28.1	27.1	23.1	26.1	48.3
90°	0.0	0.0	0.0	0.0	0.0	0.0	0.0	0.0	0.0	0.0	0.0



REPORT NUMBER: P149954

CATALOG NUMBER: VWM-F04-LED-E1-SL2-7030

**CANDELA DISTRIBUTION (continued):**

	165°	175°	180°
0°	959.1	959.1	959.1
2.5°	966.1	967.1	966.1
5°	975.2	975.2	975.2
7.5°	975.2	972.1	971.1
10°	961.1	952.0	952.0
12.5°	937.0	921.9	919.9
15°	891.7	871.6	868.6
17.5°	834.4	807.3	802.2
20°	770.1	735.9	729.9
22.5°	699.7	660.5	657.5
25°	630.3	590.1	582.1
27.5°	552.9	513.7	509.7
30°	475.5	441.3	439.3
32.5°	410.2	389.1	385.0
35°	363.9	351.9	346.8
37.5°	333.8	324.7	323.7
40°	310.6	302.6	301.6
42.5°	291.5	284.5	283.5
45°	272.4	266.4	264.4
47.5°	253.3	247.3	246.3
50°	236.3	228.2	227.2
52.5°	220.2	212.1	210.1
55°	205.1	197.0	197.0
57.5°	192.0	184.0	183.0
60°	180.0	171.9	170.9
62.5°	170.9	160.9	159.8
65°	163.9	153.8	151.8
67.5°	159.8	147.8	144.8
70°	166.9	144.8	139.7
72.5°	167.9	141.8	134.7
75°	161.9	133.7	128.7
77.5°	141.8	119.6	114.6
80°	122.6	92.5	85.5
82.5°	116.6	75.4	65.3
85°	90.5	49.3	46.2
87.5°	51.3	27.1	22.1
90°	0.0	0.0	0.0

(END OF REPORT)